



# INSTALLATION INSTRUCTIONS

Accessory

**CHROME TRUNK HANDLE**  
P/N 08U94-MCA-100

Application

**GL1800**

Publications No.

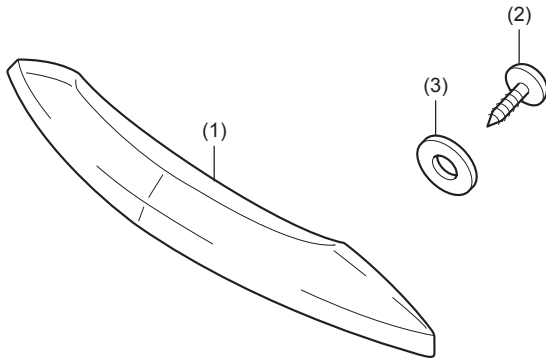
**MII 11185**

Issue Date

**July 2005**

**Honda Dealer: Please give a copy of these instructions to your customer.**

## PARTS LIST



No.	Description	Qty
(1)	Trunk handle	1
(2)	5 mm screw	3
(3)	Washer	3

## TOOLS AND SUPPLIES REQUIRED

Phillips® screwdriver  
 Electric drill motor  
 Drill bit, 5mm (#9)  
 Drill bit, 8 mm (5/16 in)  
 Awl  
 Scissors  
 Tape  
 Wood block  
 Torque wrench

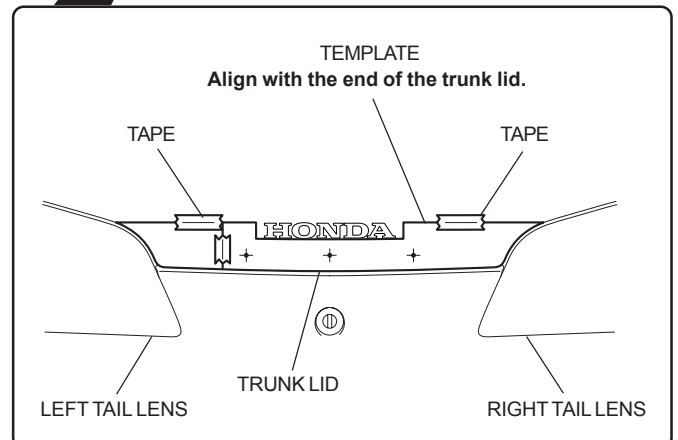
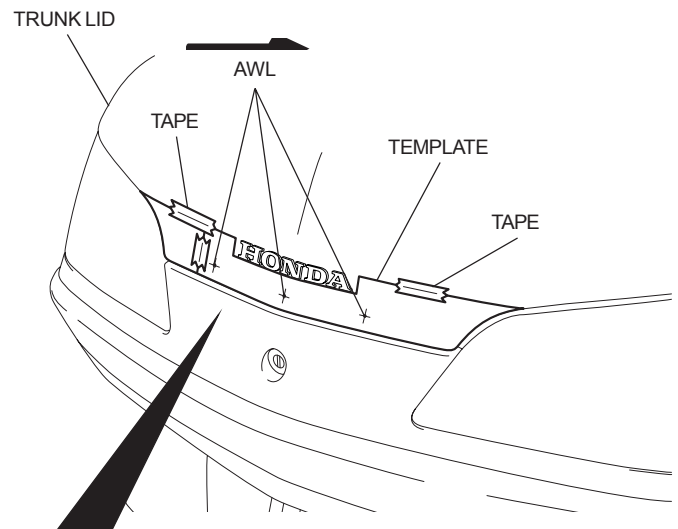
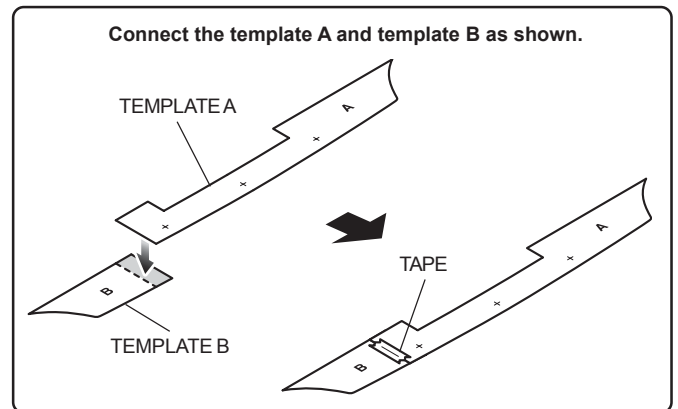
## TORQUE CHART

Tighten all screws, bolts and nuts to their specified torques. Refer to the Service Manual for the tightening torques of removed parts.

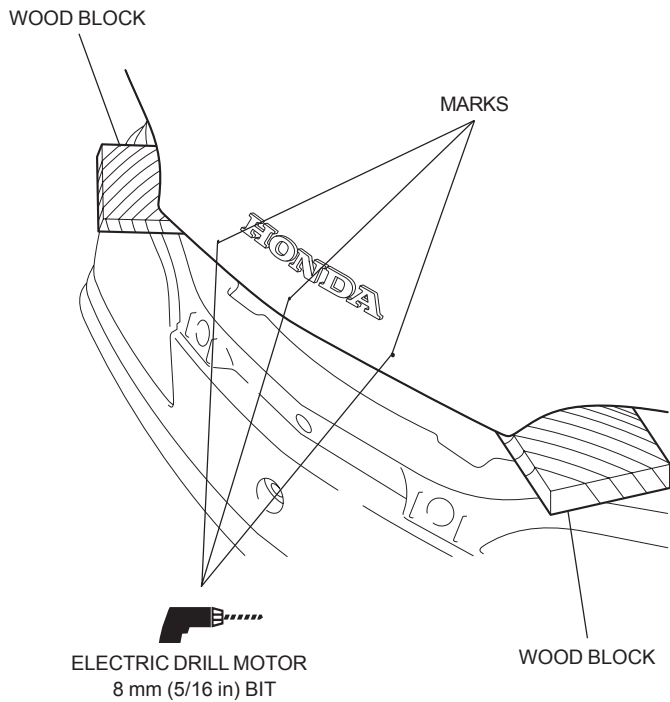
Item	N·m	kgf·m	lbf·ft
5 mm screw	4	0.4	2.9

## INSTALLATION

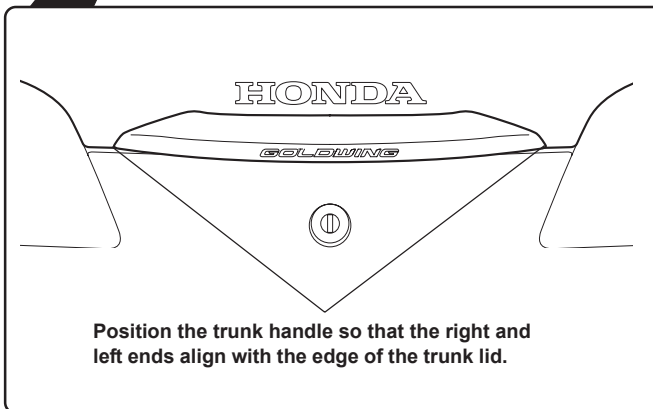
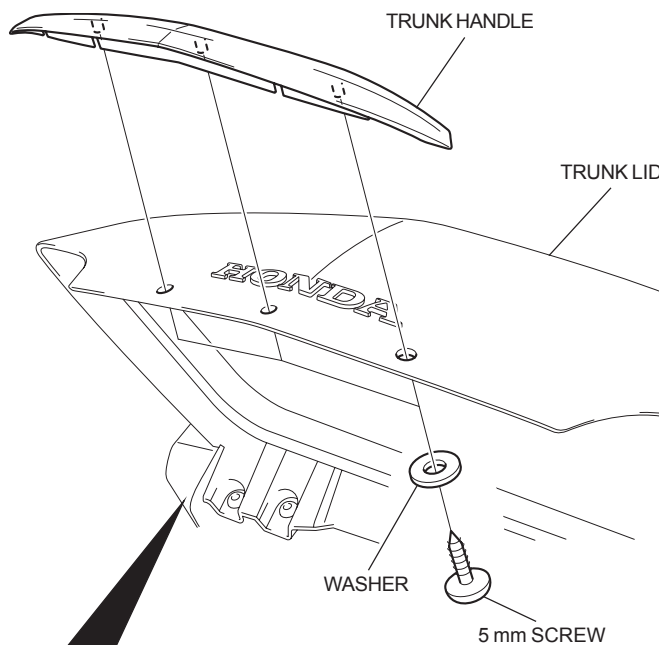
1. Cut out the template and attach it to the trunk lid in the position shown. Mark the trunk lid in the positions shown using an awl.



2. Remove the template. Drill through the marks you just made using an electric drill motor as shown.
- First drill with a 5 mm (#9) bit and finally with a 8 mm (5/16 in) bit.
  - Remove any burrs from the edge of the hole.



3. Open the trunk and install the trunk handle on the lid as shown.



# TEMPLATE

Cut out the templates and use them to mark the drilling locations.

