



INSTALLATION INSTRUCTIONS

Accessory

PASSENGER ARMREST
P/N 08R32-MCA-100

Application

GL1800

Publications No.

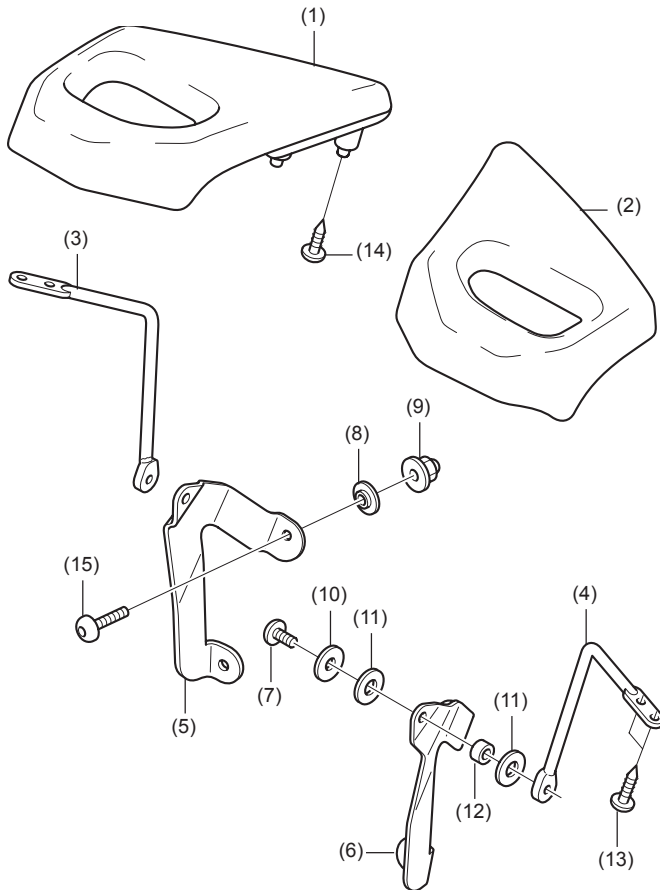
MII 11185

Issue Date

July 2005

Honda Dealer: Please give a copy of these instructions to your customer.

PARTS LIST



No.	Description	Qty
(1)	Right armrest cushion	1
(2)	Left armrest cushion	1
(3)	Right rod	1
(4)	Left rod	1
(5)	Right armrest plate	1
(6)	Left armrest plate	1
(7)	6 mm screw (short)	2
(8)	Flange washer	4
(9)	6 mm cap nut	4
(10)	Washer	2
(11)	Nylon washer	4
(12)	Collar	2
(13)	5 mm screw (long)	4
(14)	5 mm screw (short)	8
(15)	6 mm screw (long)	4

TOOLS AND SUPPLIES REQUIRED

- Hex wrench (5 mm)
- Phillips® screwdriver
- Electric drill motor
- Drill bit, 9 mm (T)
- Drill bit, 13.5 mm (17/32 in)
- Awl
- Marker
- Scissors
- Torque wrench

Customer Information: The information in this Accessory Installation Instruction is intended for use only by skilled technicians who have the proper tools, equipment, and training to correctly and safely add equipment to your motorcycle. These procedures should not be attempted by “do-it-yourselfers.”

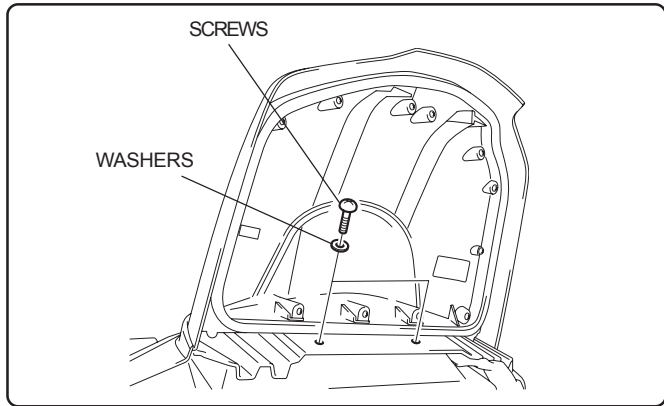
TORQUE CHART

Tighten all screws, bolts and nuts to their specified torques. Refer to the Service Manual for the tightening torques of removed parts.

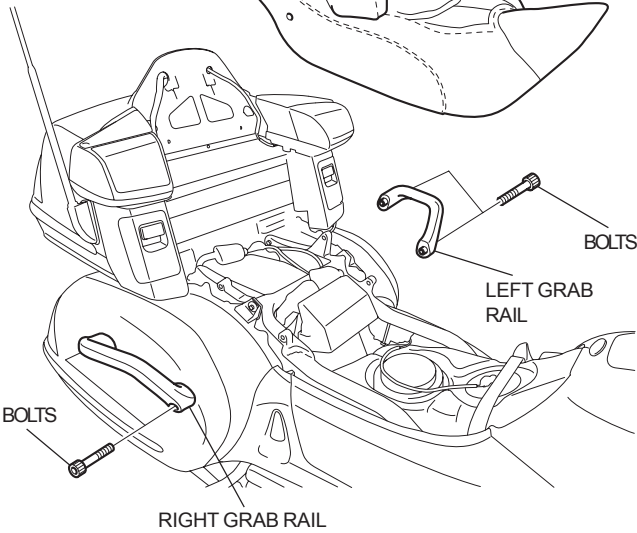
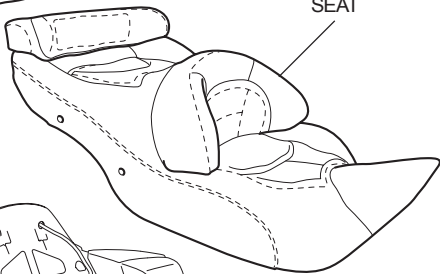
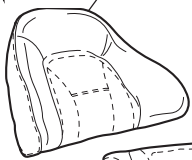
Item	Nm	kgf-m	lbf-ft
5 mm screw	4	0.4	2.9
6 mm screw	9	0.9	6.5
6 mm cap nut	12	1.2	9

INSTALLATION

1. Disconnect the negative (-) cable from the battery.
2. Remove the motorcycle's parts as shown.
 - **For the type with heated seat: Disconnect the connector.**



REAR SEAT BACKREST

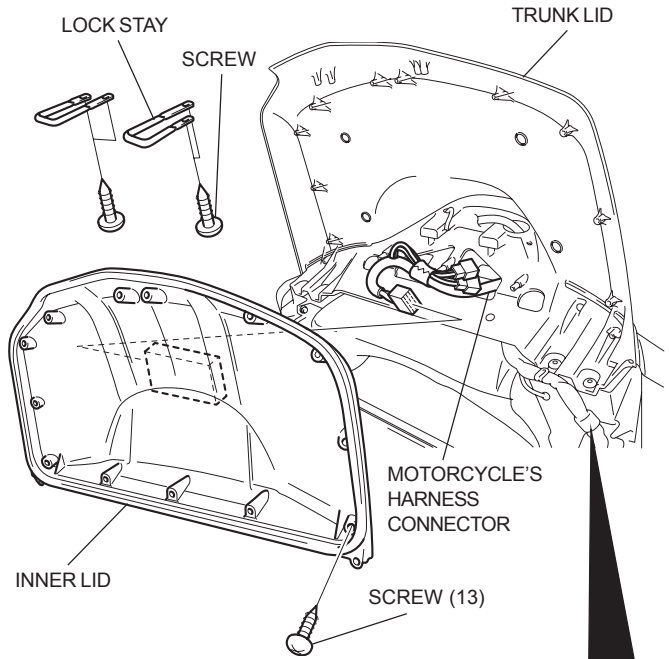


BOLTS

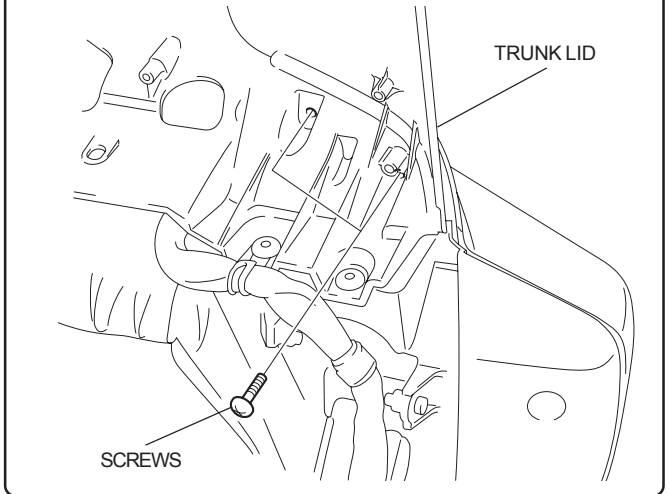
LEFT GRAB RAIL

RIGHT GRAB RAIL

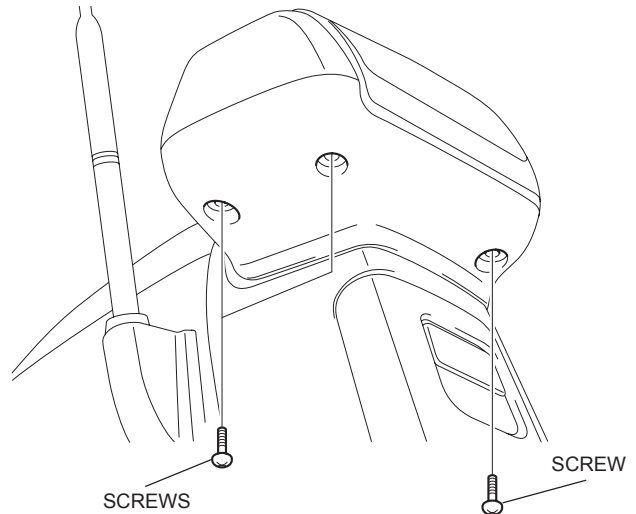
3. Remove the inner lid from the rear trunk lid.



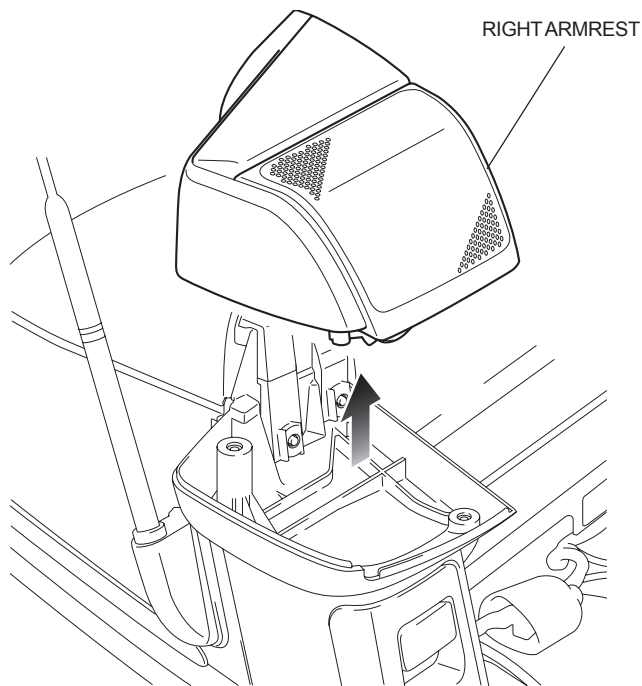
Remove the screws as shown.



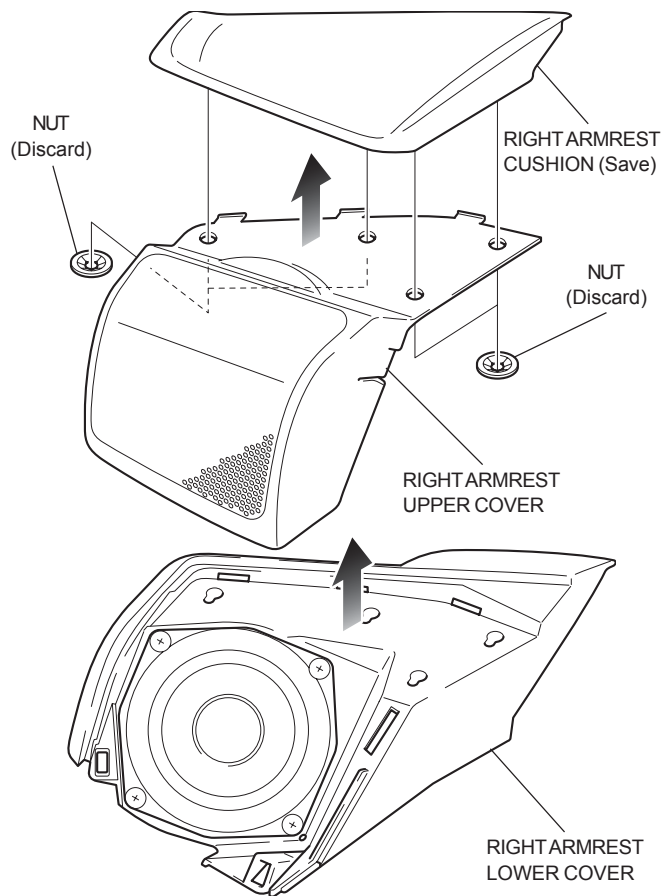
4. Remove the screws as shown.



5. Remove the right armrest as shown.

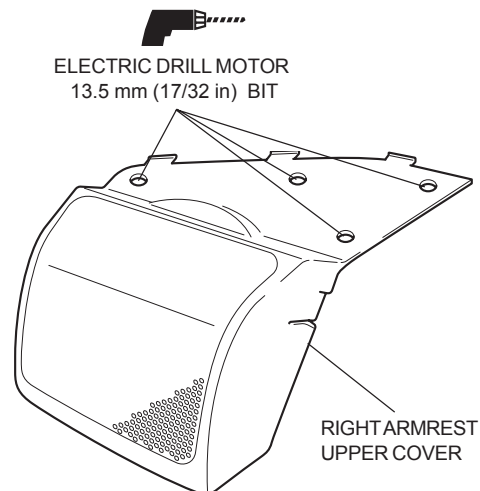


6. Remove the right armrest upper cover as shown.

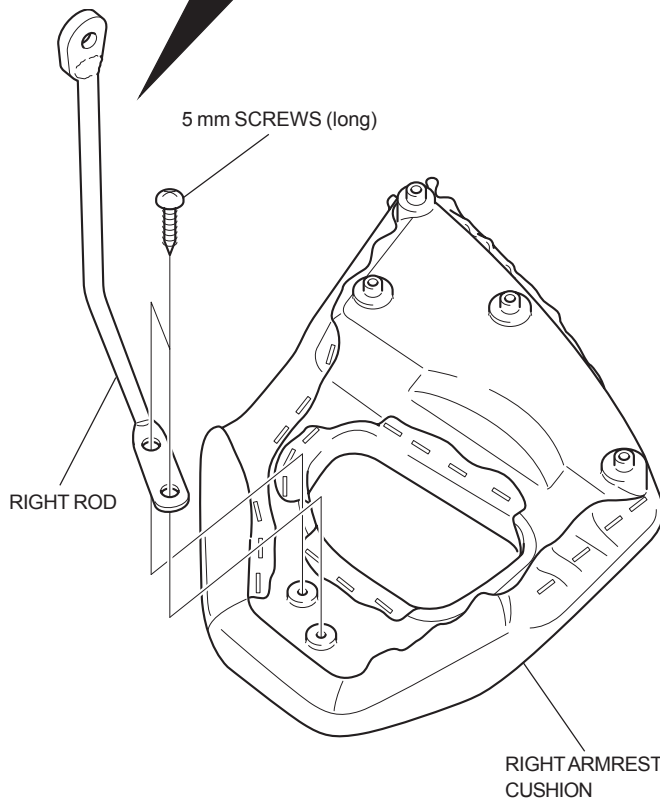
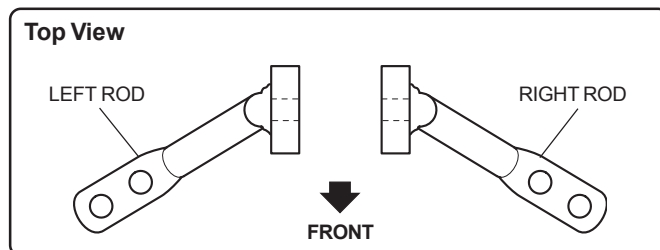


7. Enlarge the holes in the right armrest upper cover as shown using an electric drill motor.

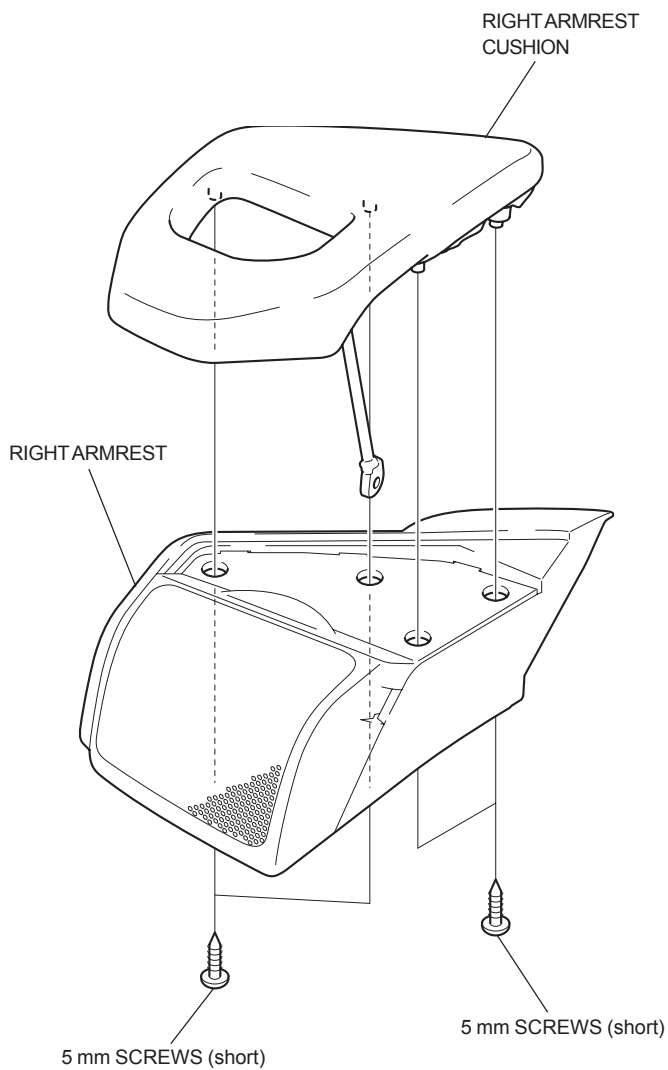
- Remove any burrs from the edge of the hole.



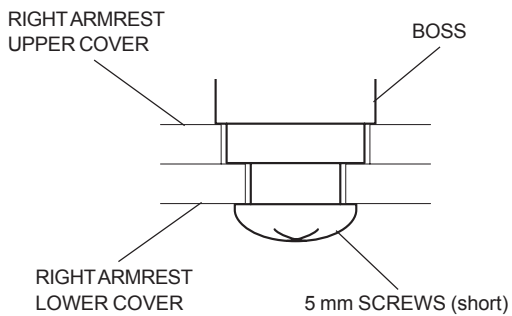
8. Install the right rod on the right armrest cushion as shown.



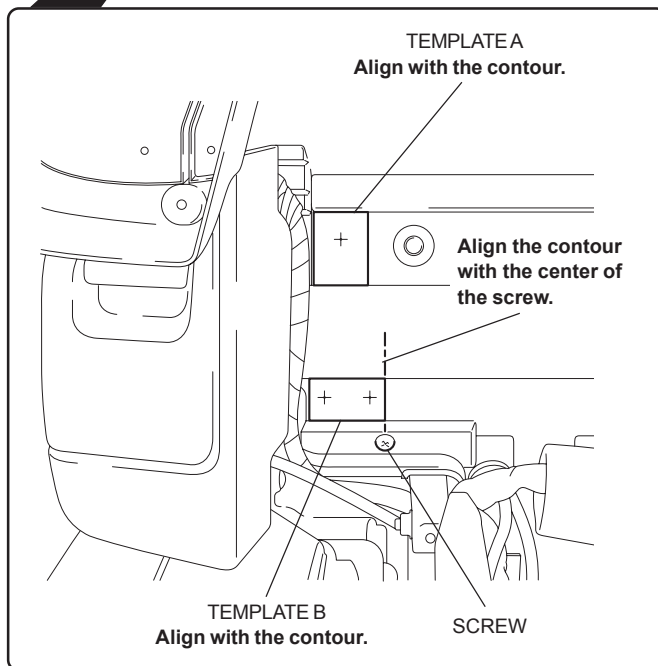
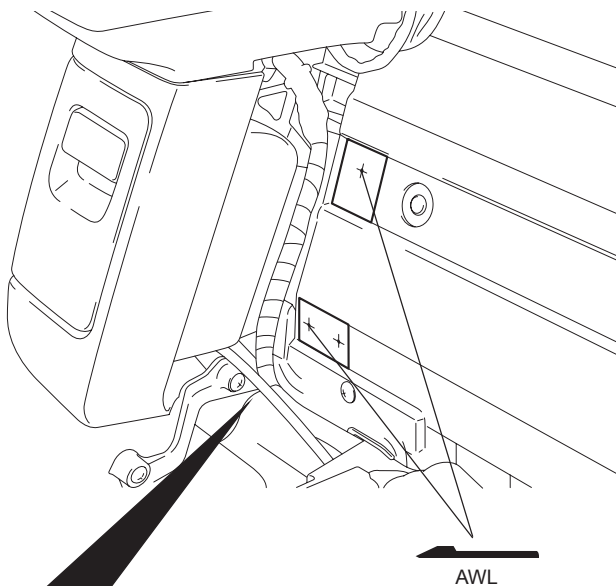
9. Assemble the right armrest in the reverse order of removal and install the right armrest cushion as shown.



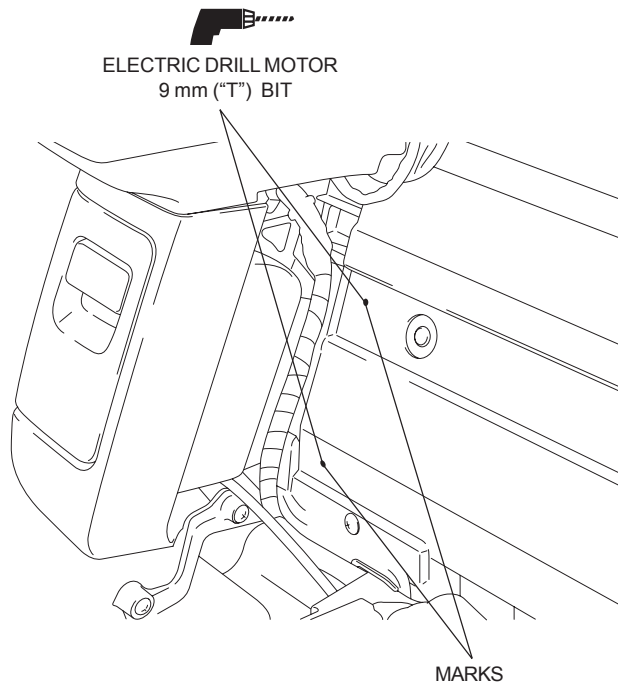
Sectional View



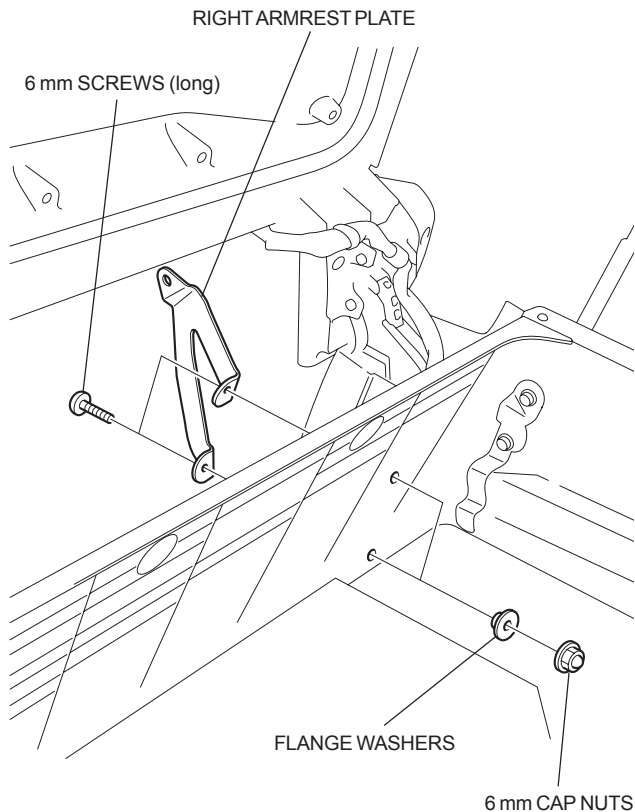
10. Cut out the templates from page 7 and attach them to the motorcycle in the position shown. Mark the motorcycle in the positions shown using an awl.



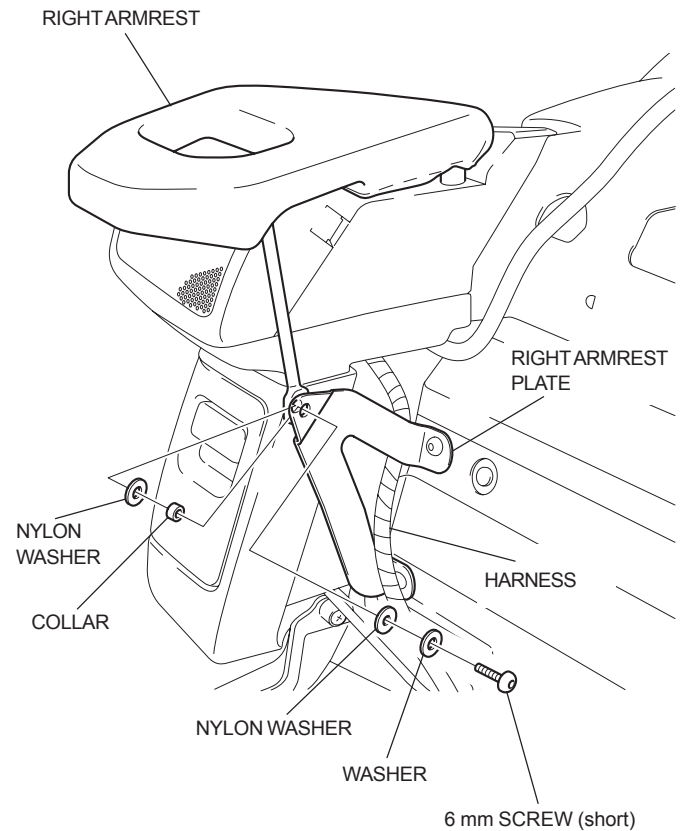
11. Drill through the mark using an electric drill motor.
 - **Remove any burrs from the edge of the hole.**



12. Loosely install the right armrest plate as shown.



13. Install the right armrest in the reverse order of removal and loosely install it on the right armrest plate.



14. Repeat the procedure on the left side and install the left armrest cushion
15. Open and close the trunk lid several times and tighten the loosely installed screws securely.
16. Connect the negative (-) cable to the battery.
17. Install the motorcycle's parts in the reverse order of removal.
18. Check operation of the brake light. Also check that all lights and other electrical accessories work properly.

TEMPLATE

Cut out the templates and use them to mark the drilling locations.

